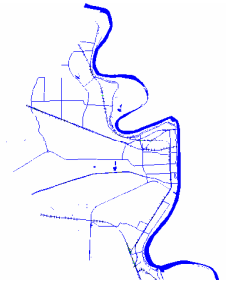


**WEST BATON ROUGE PARISH  
OFFICE OF HOMELAND SECURITY  
AND EMERGENCY PREPAREDNESS**



---

**EMERGENCY SUPPORT FUNCTION 12**

**ENERGY**

---

I. PURPOSE

ESF 12 provides for a coordinated response to maintain or re-establish natural gas, electric, water, and sewer utility services within a disaster area to best serve the needs of the parish's population. Services under this ESF include and encompass the restoration, on a priority basis, of natural gas, electric, water, and sewer utilities subjected to interruption or destruction by emergencies and disasters.

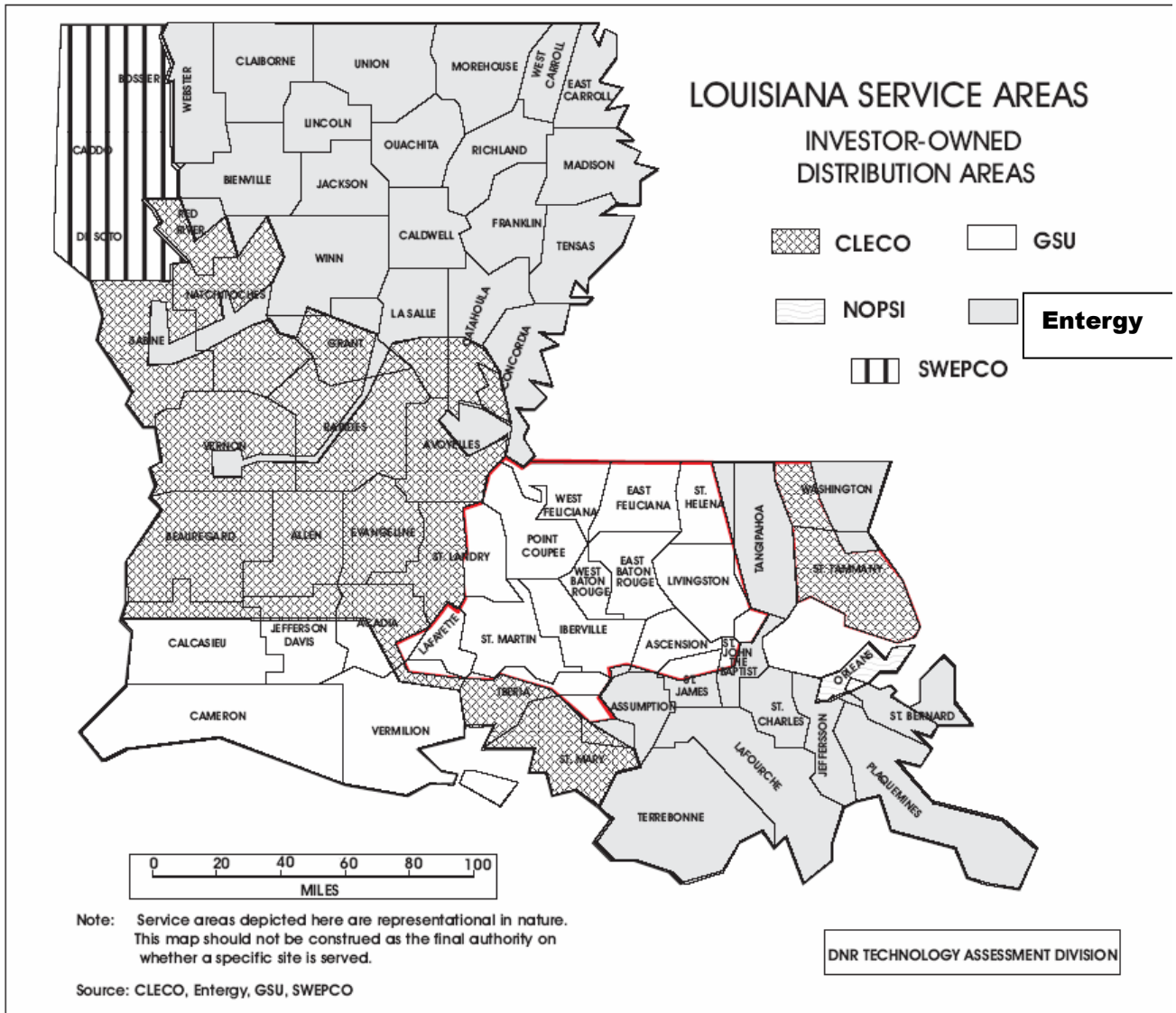
II. SITUATION AND ASSUMPTIONS

A. Situation

1. The primary electric utilities within West Baton Rouge Parish are Entergy Louisiana and Pointe Coupee Electric.
2. The primary gas utilities within West Baton Rouge Parish are City of Port Allen and West Baton Rouge Utilities.
3. All critical infrastructures within West Baton Rouge Parish are dependent upon electrical utilities.

4. Health care facilities, water treatment facilities, wastewater treatment facilities and communication facilities may have limited back-up power.
5. Critical infrastructures within West Baton Rouge Parish will be on a priority restoration list.
6. Louisiana Electrical Service Areas

Approximate Service Territory of Louisiana Investor Owned Utilities



## B. Assumptions

Utilities maintain emergency plans for the mitigation, preparedness, response, and recovery for emergencies that may affect West Baton Rouge Parish.

### III. CONCEPT OF OPERATIONS

#### A. General

1. All utilities will maintain an Emergency Operations Plan and in coordination with West Baton Rouge Parish exercise their plan at least biennially.
2. The day-to-day organizational structures will remain intact during a major emergency.
3. Utilities may use all available manpower, equipment, and material to carry out their task, including those of other departments as approved by the Parish President.
4. The Parish President is responsible for the overall recovery of West Baton Rouge Parish and may direct when and where utilities may be restored first to ensure the quickest and safest recovery.
5. Entergy Louisiana will send a representative to the Emergency Operation Center to coordinate the response and recovery to major emergencies.
6. The Parish President may direct the HSEP Director or other authority to acquire personnel and equipment needed to restore services to the affected public.

#### B. Phases of Management

1. Mitigation
  - a. The design of utility systems will offer basic protection from disaster related events.
  - b. Proper maintenance of utility right of ways

helps prevent affects of disasters.

- c. Entergy Louisiana provides Public Information Brochures to residents with information on preparing their homes during disasters to assist in maintaining the integrity of utility systems.

## 2. Preparedness

- a. All utilities maintain an Emergency Operations Plan.
- b. Utilities participate in Parish emergency planning meetings.
- c. Entergy Louisiana maintains mutual aid agreements with other electric utilities to ensure the quickest recovery during a disaster.
- d. Water and Sewage utilities have mutual aid agreements and participate in LAWARN through the Louisiana Rural Water Association.

## 3. Response

### All Utilities

If possible, protect the integrity of utility systems and coordinate activities with the Emergency Operation Center.

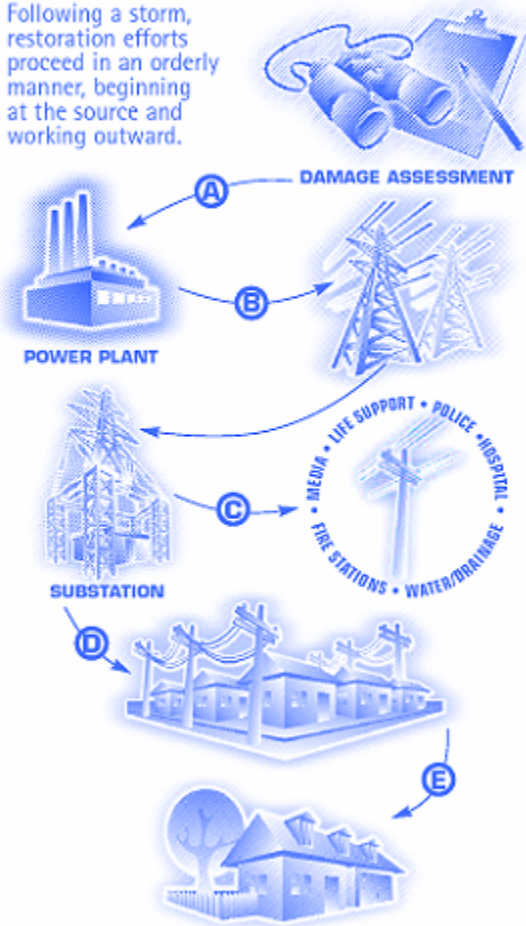
## 4. Recovery

- a. Begin the restoration of utilities in disaster affected areas if safe to do so.
- b. Restore utilities on a priority basis, giving extra emphasis to vital facilities.

Entergy Louisiana Restoration Plan:

## POWER RESTORATION

Following a storm, restoration efforts proceed in an orderly manner, beginning at the source and working outward.



Following a storm, restoration efforts proceed in an orderly manner, beginning at the source and working outward.

**A** Entergy must first assess damage to its equipment and facilities to determine corrective actions.

**B** Large transmission lines are restored first, followed by substations. These two facilities must be in working order to deliver power to local areas.

**C** Next, emergency services, life support facilities and communications networks are restored.

**D** Then, the restoration of feeder lines that serve large numbers of customers is completed, followed by lines serving neighborhoods.

**E** Individual services, often the most time consuming repairs, are restored last.

- c. Coordinate recovery efforts with the Emergency Operation Center.

## IV ORGANIZATION AND ASSIGNMENT OF RESPONSIBILITIES

### A. All Utilities

Provide for the planning, response and recovery to emergency events that may affect West Baton Rouge Parish. Coordinate efforts before, during, and after with the Emergency Operation Center.

B. HSEP

The HSEP is responsible for the activation of the Emergency Operations Center, coordination of support activity, technical advice, declaring emergencies when required, and coordinating additional personnel and equipment when required.

DIRECTION AND CONTROL

A. Authority to initiate actions.

1. It is provided that this plan:
  - a. Is the official operations source for the Parish of West Baton Rouge, governing and otherwise pertaining to all disasters related to administrative and operational tasks of the parish;
  - b. Is authorized by and promulgated under the authority contained by those local, State, and Federal statutes listed herein;
  - c. Has the concurrence of the Parish President of West Baton Rouge Parish by virtue of the letter of implementation (Promulgation Statement) signed by the Parish President;
  - d. Has the concurrence of the GOHSEP, and by that authority, the concurrence of all other branches of the State Government that operate under their direction and/or coordination under Public Law 93-288 and Louisiana Revised Statute 29:601-617; Act 636 of 1974.
2. It is understood that all Parish departments and agencies and boards of local government are an integral part of this plan.

3. There exists as part of the planning elements:
  - a. Specifically named departments with specific responses;
  - b. All other departments of Parish government, which by virtue of their association constitute a large reserve of material and manpower resources. At the direction of the Parish President, such departments may be requested to supplement specifically assigned disaster response roles vital to the well-being of the Parish;
  - c. The executive group is aware of its responsibility to provide accurate and timely information to the public, especially in a time of emergency.

B Command Responsibility for Specific Action.

1. The Parish President and the various ordinances enacted by the West Baton Rouge Parish Council have the responsibility of meeting the dangers to the Parish. This authority shall include but not be limited to the declaration of an emergency condition within the political jurisdiction.
2. The HSEP Director acts as the chief advisor to the Parish President during any declared emergency affecting the people and property of West Baton Rouge Parish. Various Parish agencies and departments under the direction of the West Baton Rouge Parish HSEP will conduct emergency operations.
3. State and Federal officials will coordinate their operations through the Parish President or the designated representative.
4. Emergency Operations Center (EOC)

VI. Continuity of Government

Effective comprehensive emergency management operations depend upon two important factors to ensure continuity of government from the highest to the lowest level: (1) lines of succession for officials / agency heads / authorized personnel and (2) preservation of records.

A. Succession of Command

State Government Succession

Article IV, Section 5(A) of the Constitution of Louisiana vests in the Governor the Chief Executive power of the State. The Governor holds office for four years and can immediately succeed himself/herself. Article IV, Section 5 (J) further establishes the emergency management powers of the governor. Article IV, Section 14 of the constitution provides for the line of succession to the governor as follows:

- a. Governor
- b. Lieutenant Governor
- c. Secretary of State
- d. Attorney General
- e. Treasurer
- f. Presiding Officer of the Senate
- g. Presiding Officer of the House of Representatives

Local Government Succession

See West Baton Rouge Parish Emergency Operations Plan, Annex A – Direction and Control

B. Relocation of Government

West Baton Rouge Parish provides for the relocation of the center of Parish government to the Emergency Operations Center. If the primary EOC of West Baton Rouge Parish must be relocated, the alternate EOC will be manned.

C. Preservation of Records

1. State Level

Each agency/department is responsible for maintaining and recording all legal documents affecting the organization and administration of emergency management functions. It is the further responsibility of the State officials to ensure that all records are secure and protected from elements of damage or destruction at all times.

2. It is the responsibility of the elected officials to ensure that all legal documents of both a public and private nature recorded by the designated official (e.g., tax assessor or sheriff's office) be protected and preserved in accordance with applicable state and local laws. Examples include ordinances, resolutions, minutes of meetings, land deeds, and tax records.

## VII. ADMINISTRATION OF LOGISTICS

- A. The Parish EOC may be located at the on-scene command post and is designed as the interfacing point for decision-making, coordination, administration, resource information exchange, and emergency response management by Parish officials and other appropriate persons.
- B. All necessary records and reports will be maintained on each incident.

## VIII. PLAN DEVELOPMENT AND MAINTENANCE

The HSEP Director will be responsible for maintaining and updating this plan. Standard operating procedures for hazardous materials response will be maintained by the Fire Department.

## AUTHORITIES AND REFERENCES

### A. Authorities

Louisiana Emergency Preparedness and Assistance Act, 1993.

### B. References

Basic Plan of West Baton Rouge Parish Emergency Operations Plan.

APPENDICES:

1. Organization Chart
2. Responsibility Chart
3. List of government utilities in the parish with 24 hour contact information

TAB A	Electric
TAB B	Natural gas
TAB C	Water and sewer

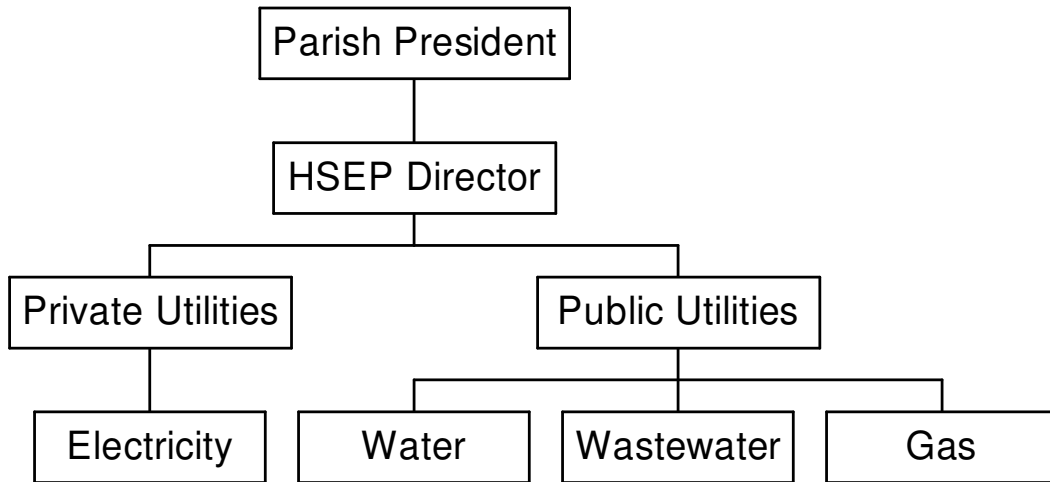
4. List of private utilities in the parish with 24 hour contact information

TAB A	Electric
TAB B	Natural gas
TAB C	Water and sewer

5. Agreements on priorities for utility restoration, updated annually

Appendix 1

Energy (Utilities)  
Organizational Chart



## Appendix 2

### Responsibility Chart

The image shows a placeholder for a Responsibility Chart, consisting of a grid of 10 cells arranged in 2 rows and 5 columns. The top row has a large gray cell on the left, followed by a white cell, a gray cell, a white cell, and a gray cell. The bottom row has a gray cell on the left, followed by a white cell, a gray cell, a white cell, and a gray cell.
